



Entomology and Nematology Emergency Action Plan

In compliance with:

California Code of Regulations

Title 8, Section 3220

Implementation Date: 7/10/23

Annual Review Date*:

_____	_____	_____
_____	_____	_____
_____	_____	_____
_____	_____	_____

*Reviewed and initialed by Department Safety Coordinator

Document Change Record

Date	Page(s)	Change
3/2021	13	Removed workplace preparedness kit.
3/2021	5, 6	Updated FireNet to SafetyNet and replaced links to SafetyNet documents.

Introduction

An Emergency Action & Evacuation Plan (herein referred to as an EAP) covers designated actions employers and employees must take to ensure employee safety from emergencies. [Cal-OSHA regulations](#) require employers to establish, implement and maintain an EAP. The program must be in writing and include the following elements:

- The preferred means of reporting fires and other emergencies
- A system to alert and notify employees of an emergency
- Evacuation types, procedures and emergency escape routes
- Procedures for employees who remain to operate critical plant operations before they evacuate
- A procedure to account for all employees after an emergency evacuation is completed
- Rescue and medical duties for those employees who are able to perform them
- Names or regular job titles of persons or departments who can be contacted for further information or explanation of duties under the plan

Contact Information

**This EAP has been prepared for UC Davis Entomology and Nematology Department.
The plan complies with California Code of Regulations, Title 8, Section 3220.**

Entomology and Nematology

(Office Name)

367 Briggs Hall

(Office Location)

(530) 752-0492

(Phone)

jcchiu@ucdavis.edu

(email)

Joanna Chiu

(Director/Dean/Chairperson/Lead)

(646) 703-4905

(Phone)

jcchiu@ucdavis.edu

(email)

Andrew Ross

(Department Safety Coordinator)

(530) 219-8598

(Phone)

abross@ucdavis.edu

(email)

Nora Orozco

(Alternate Safety Contact)

(530) 752-3711

(Phone)

norozco@ucdavis.edu

(email)

**This Emergency Action & Evacuation Plan will be
reviewed annually in:**

July

Emergency Protocols-Alert and Notification

Reporting Emergencies:

In the event of an emergency, UC Davis employees should contact UC Davis Dispatch by dialing **9-1-1** from a land line or from a cell phone call 530-752-1230.

You should call 9-1-1:

- In the event of a medical emergency
- To report all fire incidents, *even if the fire is extinguished*
- To report criminal or suspicious behavior
- If you are in doubt about the seriousness of a situation, such as any possible situation that you believe may be serious and that may result in injury, death, loss of property, apprehension of a suspected criminal or prevention of a crime that is about to occur.

Provide the following information to UC Davis Dispatch upon calling

- Where you are
- The address or location of the event

Alert and Notification of Employees:

The university has a variety of ways to alert employees and students to emergencies and provide direction. These include:

- Audible alarms
- Visual alarms/signals
- Verbal notification
- UC Davis WarnMe / Aggie Alert
- Social media

Examples of notification methods include: fire alarm system, PA system, phone tree, bullhorn, even just flashing the lights can be a way to let people know there is an emergency happening.

The department itself will use the following methods to provide alerts and notifications to its employees:

Primary Method: Audible/Visual Alarms

Additional notifications: Email/Verbal notifications

Emergency Protocols-Evacuation

Evacuation Procedures & Routes

Many incidents (*e.g.* building fire, police response) could require an evacuation of all or part of the campus. All employees must evacuate the building when notified to do so. The type of evacuation or protective measure may be specified as part of the notification. Please refer to Policy & Procedure [390-10](#) for more information on Campus Emergency Policy.

Evacuation Types

- **Evacuation:** Evacuation is total building or partial building evacuation due to conditions making it no longer safe to remain inside a building or a specific area in a building. This level of evacuation requires occupants to move out and away from the building being evacuated.
- **Controlled Evacuation:** Controlled evacuation is total building or partial building evacuation due to safety conditions or an armed intruder making it no longer safe to remain inside a building or specific area in a building. This level of evacuation requires occupants to move out and away from the building once notified.
- **Shelter-in-Place:** Shelter-in-place means selecting a small interior room, with no or few windows, and taking refuge there; it does not mean sealing off your entire office. Shelter-in-place is used in emergency situations where hazardous materials have been released into the atmosphere or in emergencies related to civil unrest or violent demonstrations.
- **Lock Down:** Lockdown is the temporary sheltering technique utilized to limit exposure to an armed intruder or similar incident. When alerted, occupants of a building within the area of concern will lock all doors and windows, not allowing entry or exit to anyone until the all clear has been sounded. If you are in a ground floor office or common area, take precautions and move away from glass windows or doors and seek shelter in a locked room of office.

Prior to Exiting

After being notified to evacuate, stop all work activities and evacuate immediately. Securely close departmental and office doors behind you. You may choose to lock your doors to prevent property theft (the UC Davis Fire Department has keys to campus buildings and rooms if access is necessary). Remember that you may not be allowed back into the building for an extended time.

Evacuation Routes/Exiting the Building

During an emergency evacuation, use the nearest door or stairway if available. Each employee needs to be aware of at least two exit routes in their main building in the event one is compromised.

All campus buildings over one story high must have building evacuation signs posted on every floor. The signs must be posted at all stairway and elevator landings and immediately inside all public entrances to the buildings. More information on this is available in the SafetyNet 504 [Emergency Evacuation Signs](#).

If you or any persons under your supervision have any disabilities that may prevent them from evacuating the building in a timely manner please contact the Department Safety Coordinator: Andrew Ross (530) 752-2592 abross@ucdavis.edu to arrange a suitable procedure to insure their safety and timely evacuation

from the building. More information and guidance on this topic can be found in the [SafetyNet 534 Guidelines to Emergency Evacuation Procedures for Employees/Clients with Disabilities](#).

Assembly Area

After exiting the building, all employees, students, volunteers, and visitors should follow the evacuation route to the pre-arranged assembly area.

*[Assembly Area Guidelines](#)
have been developed to
help DSCs choose the
safest location to
assemble.*

The Department Director/Dean/Chair should assign an Assembly Area Manager to each evacuation location. List all buildings in which department members are assigned space and the corresponding assembly areas and manager.

Building: Briggs Hall Primary Assembly Area: Grassy Area Southeast of Main Entrance Assembly Area Manager: Nora Orozco

Secondary Assembly Area: Foyer of Biological Sciences Lab Building Responder Liaison: Nora Orozco

Building: Hutchison Hall Primary Assembly Area: Southeast of building near California Hall Assembly Area Manager: Keshmi Rajan

Secondary Assembly Area: Foyer of California Hall Responder Liaison: Andrew Ross

Building: Storer Hall Primary Assembly Area: Grassy Area Southwest of Building Assembly Area Manager: Rodrigo Del Rio

Secondary Assembly Area: Foyer of the Biological Sciences Lab Building Responder Liaison: Yao Cai

Building: Academic Surge Primary Assembly Area: Northeast side of Building Assembly Area Manager: Brennen Dyer

Secondary Assembly Area: Meyer Hall Responder Liaison: Tabatha Yang

Building: Everson Hall Primary Assembly Area: Grassy Area East of Building Assembly Area Manager: Jun Yang

Secondary Assembly Area: Peter A. Rock Hall Responder Liaison: Jun Yang

Building: Laidlaw Honey Bee Research Facility Primary Assembly Area: Parking Lot North of the Building Assembly Area Manager: Joseph Tauzer

Building: Orchard Park Head House/Greenhouse Complex Primary Assembly Area: Parking Lot West of the Buildings Assembly Area Manager: Anil Mantri

All employees should stay within your respective group at the Assembly Area. No one should leave the area until notified by the First Responders, Assembly Area Manager, or Responder Liaison.

Assigned Job Responsibilities

Assembly Area Manager Duties:

It is recommended that the senior employee or their designee acts as the Assembly Area Manager. The Assembly Area Manager should be responsible for taking roll call and therefore it is imperative that *prior* to an emergency the Department Safety Coordinator (DSC) and Assembly Area Manager work together to ensure an updated employee roll call sheet is available and accessible at the time of the emergency.

Ideally, the person responsible for roll call will take a personnel list (use attached form or alternate) before leaving the building. The Assembly Area Manager should report any injuries in need of immediate care to First Responders. Any other minor injuries should be documented and reported through the proper chain of command to Joanna Chiu, Entomology and Nematology Department Chair

The Assembly Area Manager is responsible for sharing information as it becomes available to the evacuated persons. The Assembly Area Manager *should not leave* the assembly area; therefore it is suggested the Assembly Area Manager assign a liaison to the First Responders.

Responder Liaison Duties:

The Responder Liaison ensures important communication and information exchange between the First and Second Responders (*e.g.* Fire, Police, Facilities), and the Area Assembly Manager. The Responder Liaison (whom may be the DSC if present) is responsible for informing the on-scene Incident Commander of the status of department employees and visitors. Responder Liaisons should be prepared to provide the following information (if known)

- Nature of the emergency (*e.g.* fire)
- Location of the emergency
- Number of persons trapped
- Number of persons hurt
- Number of persons unaccounted for

If needed, the Responder Liaison should recruit volunteers to help direct and contain evacuees to the Assembly Area.

After a major incident, building occupants may not re-enter buildings until cleared by a campus official.

Procedures for Employees Who Remain to Operate Critical Operations

The Entomology and Nematology Department does not have any critical operations requiring anyone to remain in the buildings during an evacuation.

AED / CPR Training

UC Davis relies on the UC Davis Fire Department and partnering agencies to provide rescue and medical assistance. It may be useful to document employees in your department who have specialized medical training.

Andrew Ross	CPR/AED, First Aid	July 2022
Joseph Tauzer	CPR/AED, First Aid	July 2022
Anil Mantri	CPR/AED, First Aid	July 2022
Yao Cai	CPR/AED, First Aid	July 2022
Lauren Rusert	CPR/AED, First Aid	July 2022
Brennen Dyer	CPR/AED, First Aid	July 2022

The individuals listed above should not practice outside their scope of training and are not expected or required to assist in any emergency or medical situation.

Responsibilities of the Department Safety Coordinator

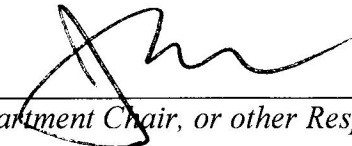
Andrew Ross is responsible for implementing essential elements including planning, evaluating, and implementing the EAP. The following duties must be performed to maintain an effective EAP:

- Review and update the EAP annually or as needed.
- Update and submit the [Emergency Call List](#) to the [UC Davis Dispatch Center](#).
- Train employees on the location of emergency exits, fire extinguishers, manual pull stations, first aid kits, and AEDs if applicable.
- Ensure evacuation routes are posted and walkways remain clear at all times.
- Train employees annually on the EAP, including the “Additional Training” sections. Ensure all new hires are familiar with the procedures and a copy of the plan is made available. **Document all training.**
- Train the Assembly Area Managers, Responder Liaisons, and Alternate Department Safety Contact. Confirm they understand their duties as assigned in the plan.
- Exercise your department’s EAP annually. It is recommended you exercise your plan in the following order:
 1. **Conduct a Tabletop Exercise.** This will allow departments to use their training on the EAP, as well as to work through any inefficiencies *prior* to an emergency. Contact the [UC Davis Office of Emergency Management and Mission Continuity](#) for training or assistance with your tabletop exercise.

2. **Schedule a Building Evacuation.** The UC Davis Fire Department can perform a limited number of building evacuations each month. Advanced notice and coordination between the departments that share your building **before** the exercise is critical. The Fire Department **will not** conduct the exercise if coordination between department DSCs has not occurred. Please contact your [Department Safety Coordinator](#) to schedule an exercise. Evacuations will be scheduled on a first come first serve basis and times and dates will be decided based on the Fire Department's availability. To schedule a fire drill, please contact the [UC Davis Fire Department](#).

Signatures

This EAP has been reviewed and approved by the following individuals:

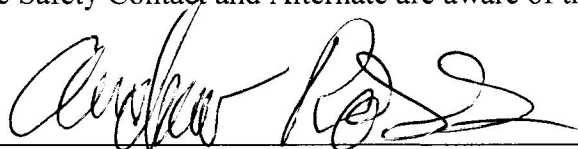


(Department Chair, or other Responsible Person)

8/11/2023

(Date)

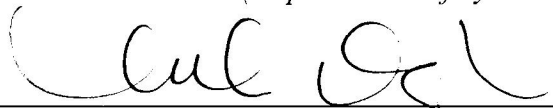
The Safety Contact and Alternate are aware of their responsibilities, as described in this plan:



(Department Safety Coordinator)

8/10/23

(Date)



(Alternate Safety Contact)

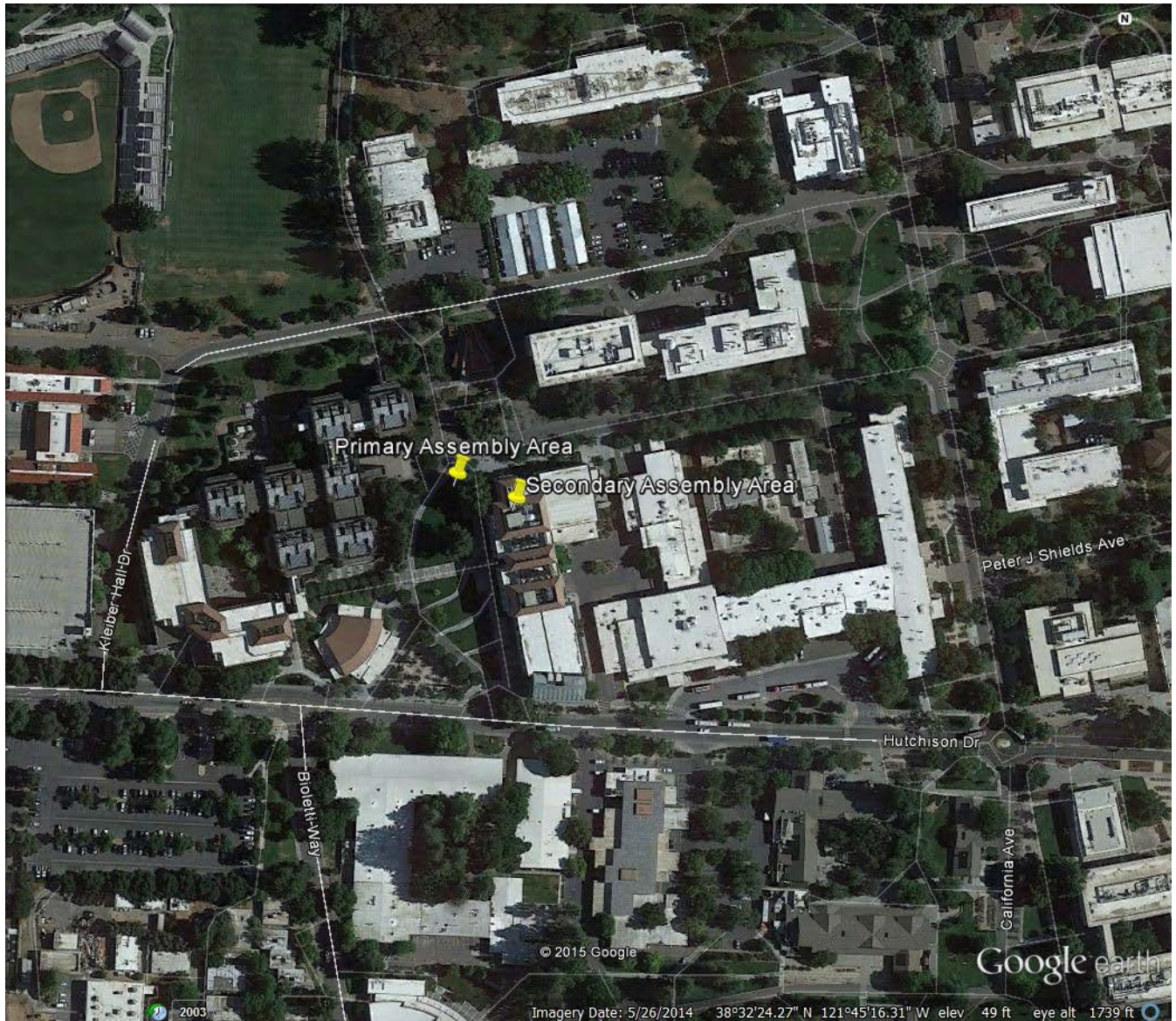
8/14/23

(Date)

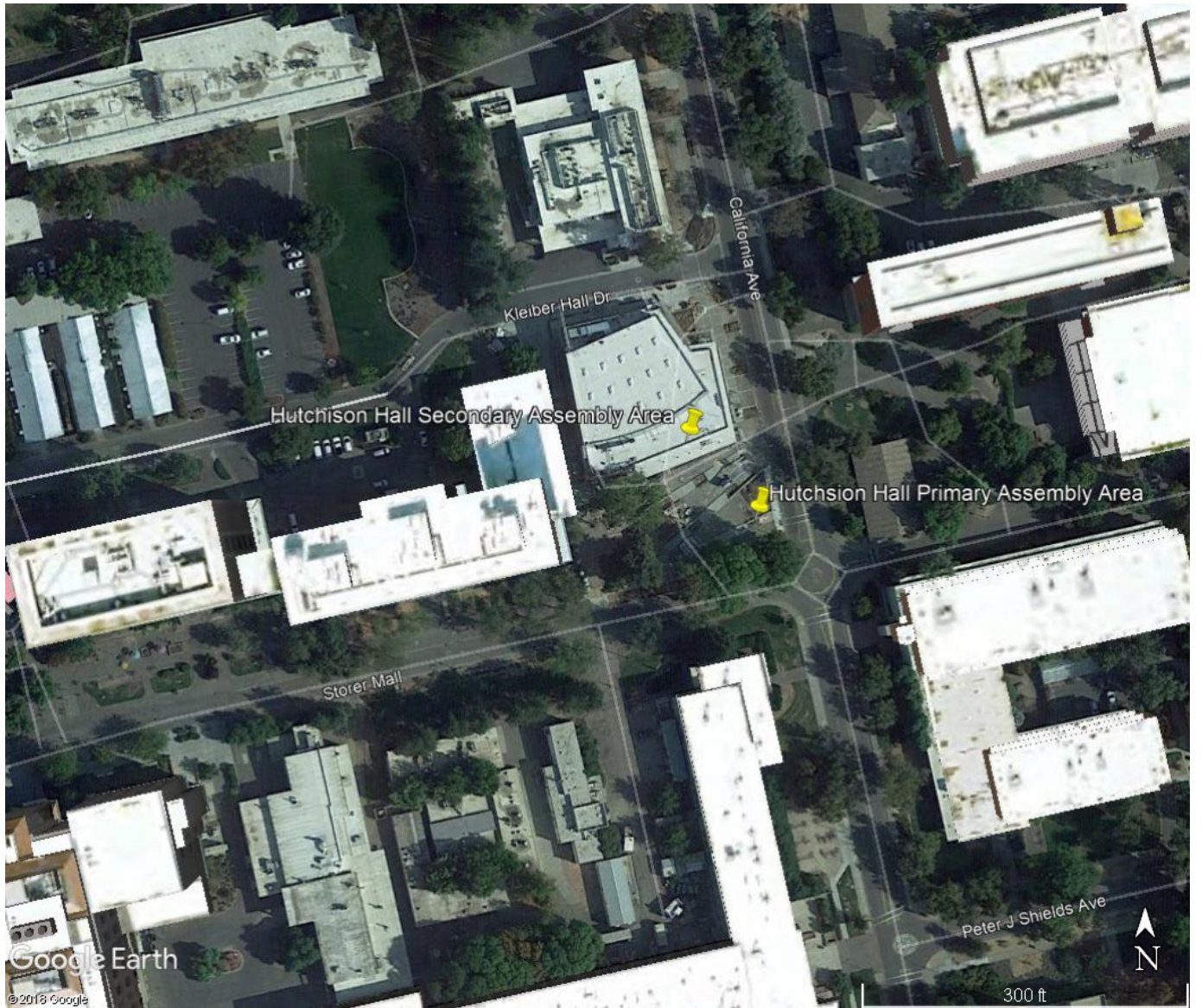
Additional Comments:

ASSEMBLY AREAS

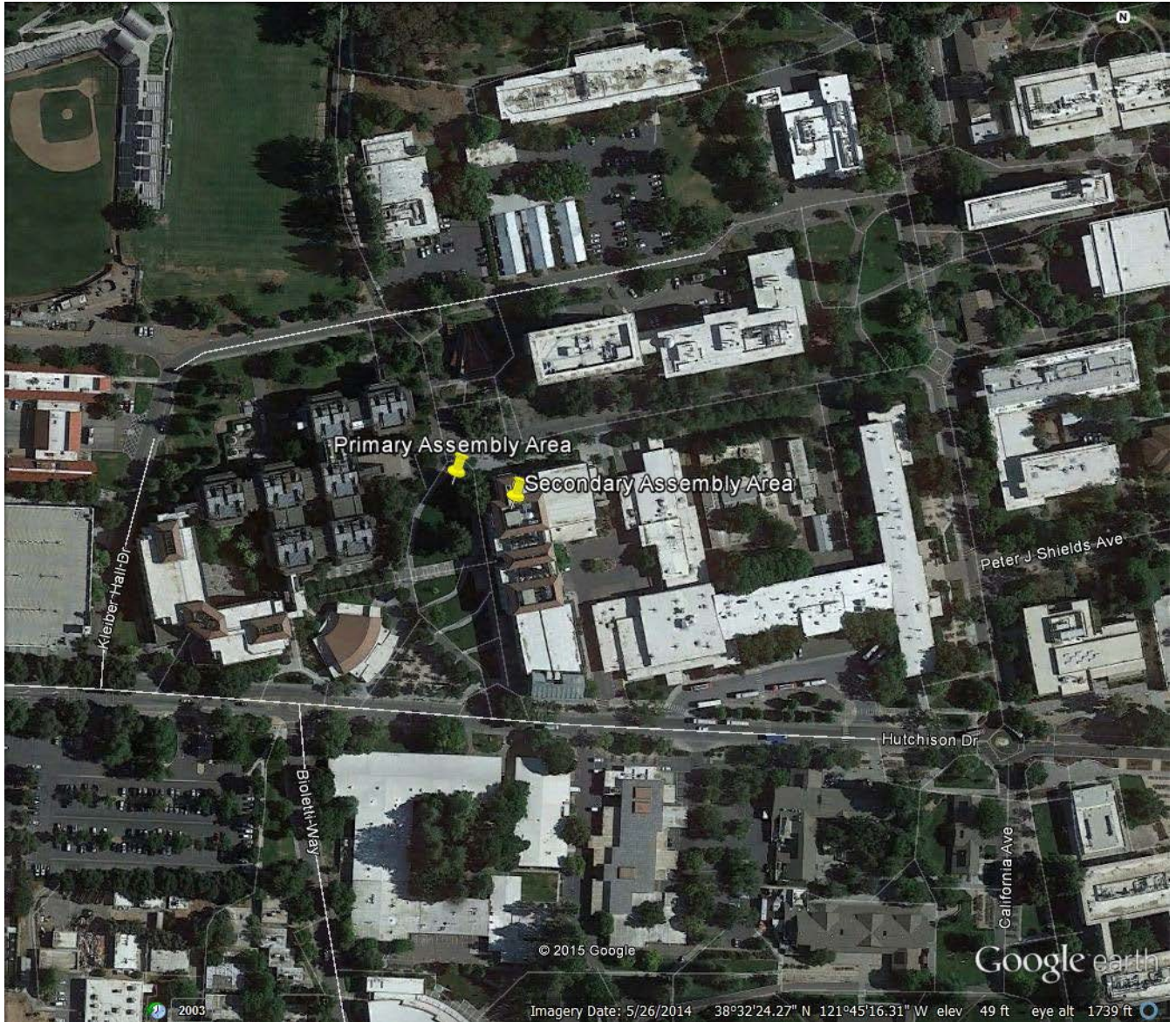
BRIGGS HALL



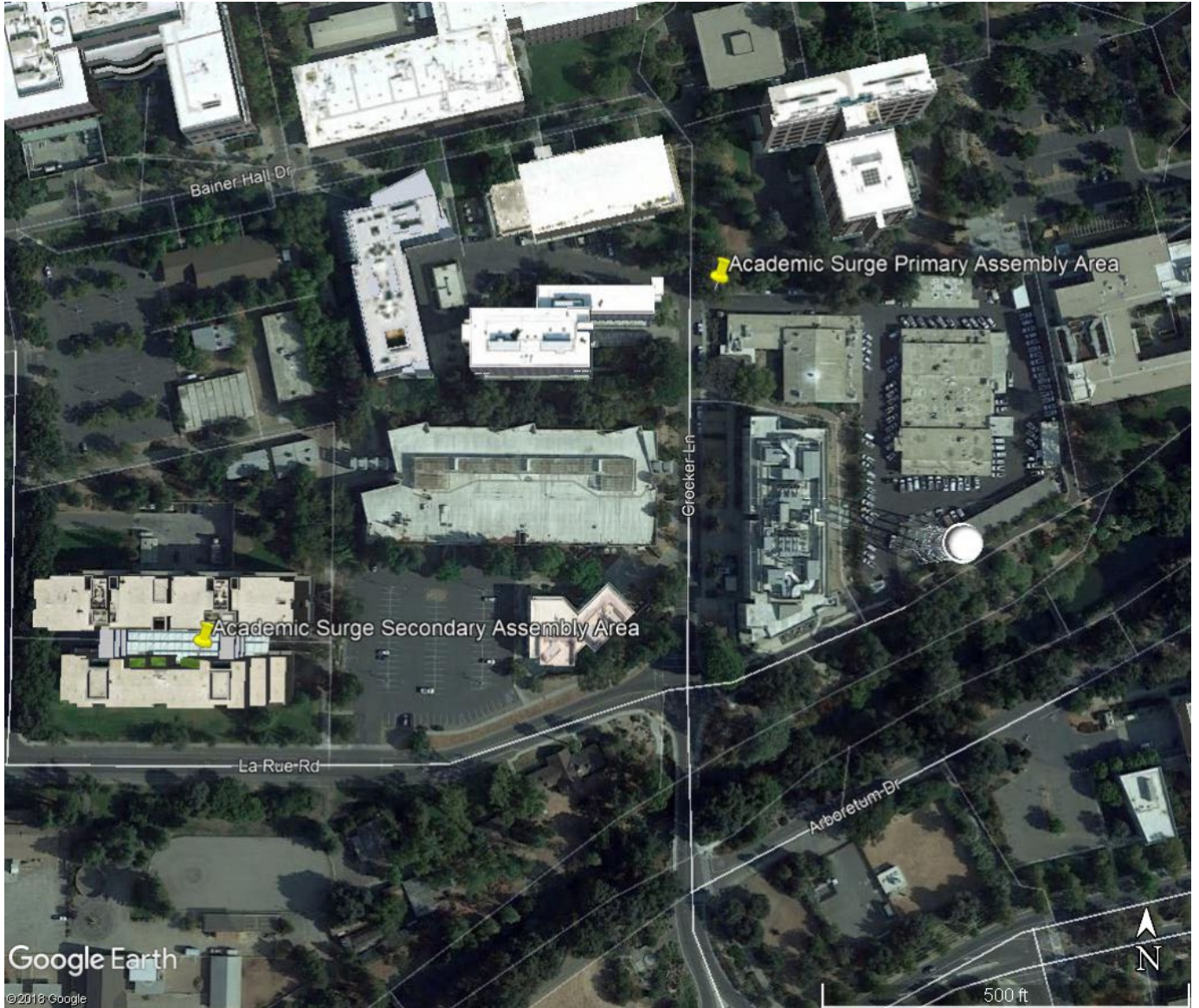
HUTCHISON HALL



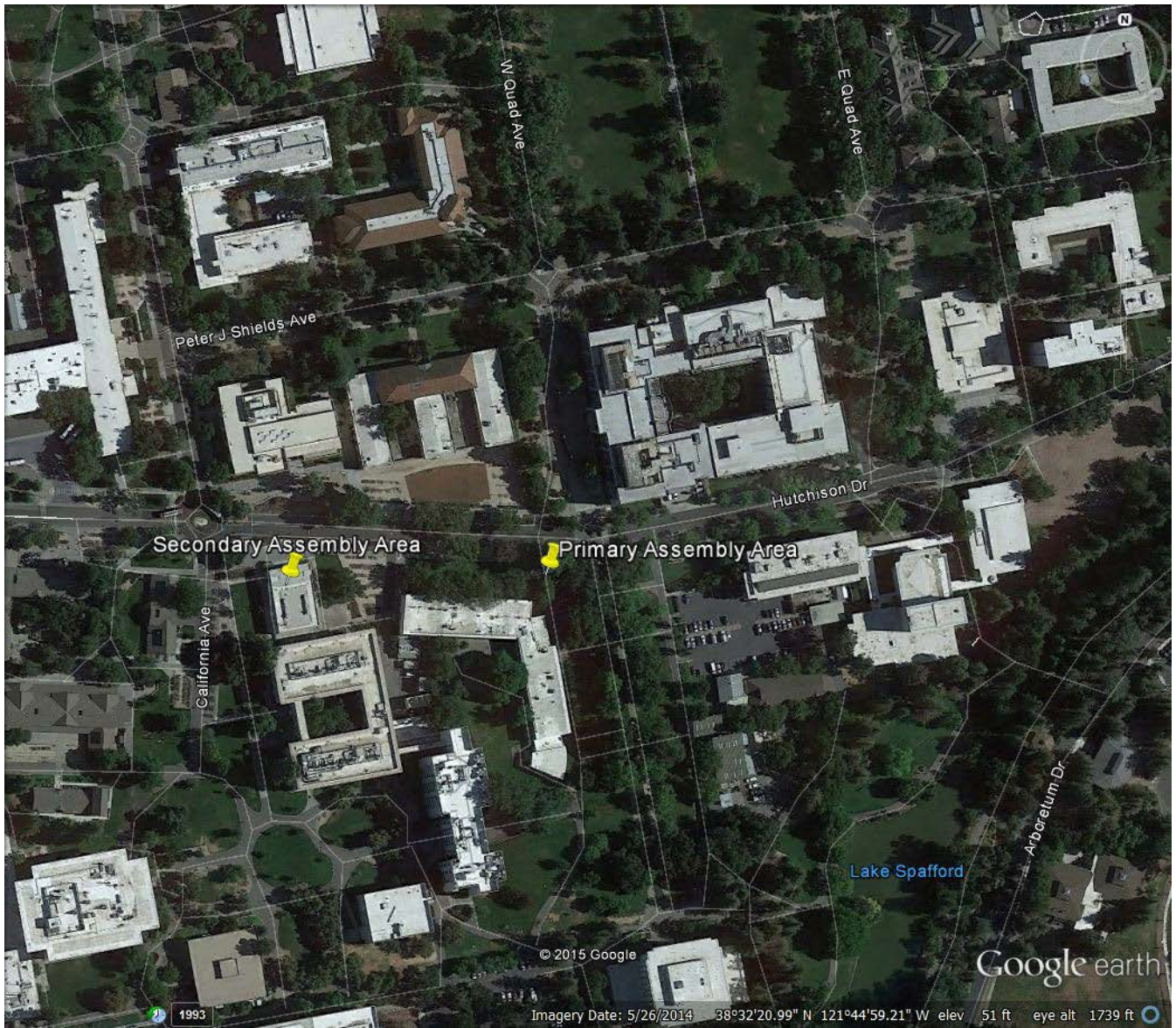
STORER HALL



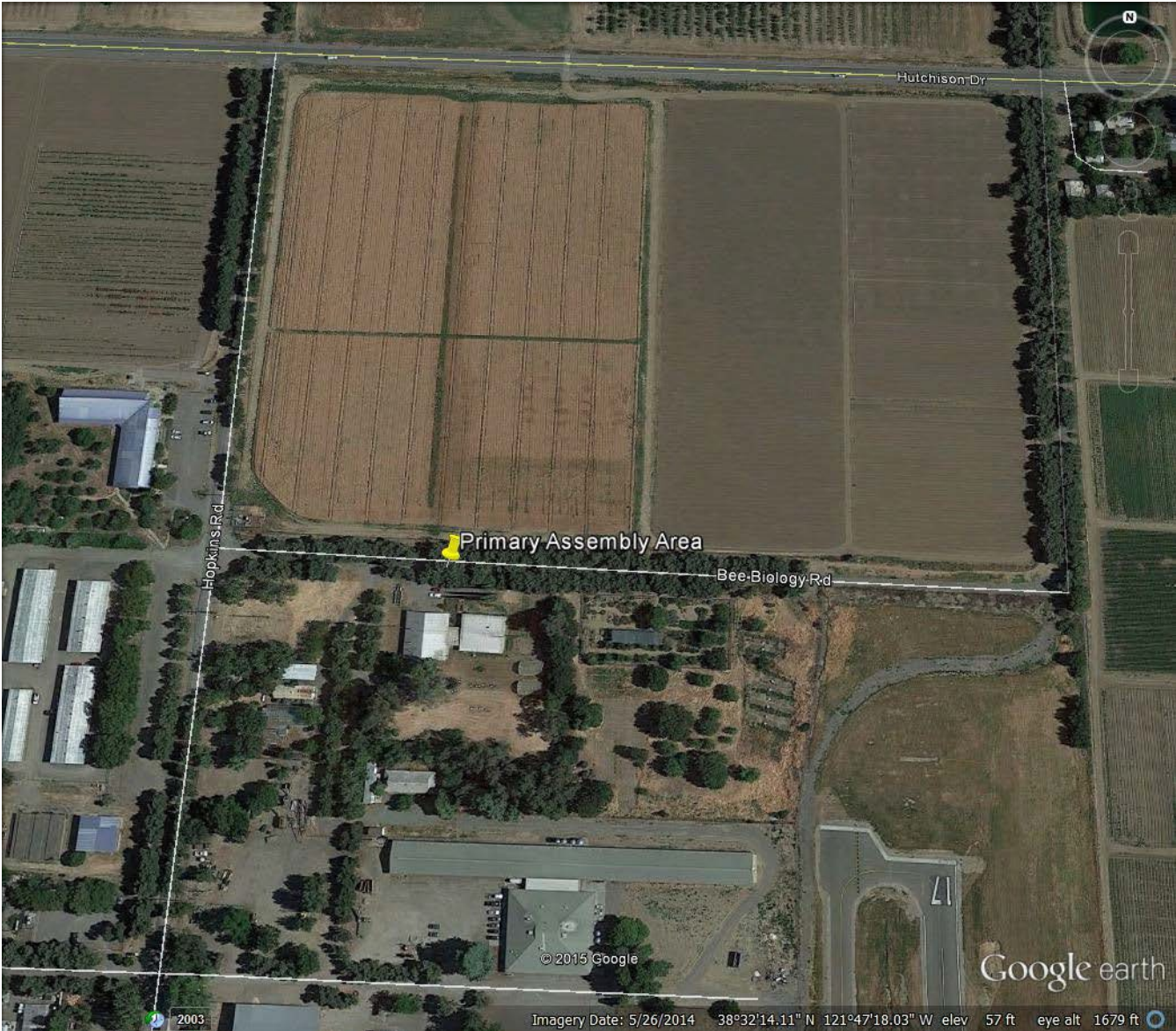
ACADEMIC SURGE



EVERSON HALL



LIDLAW BEE RESEARCH FACILITY



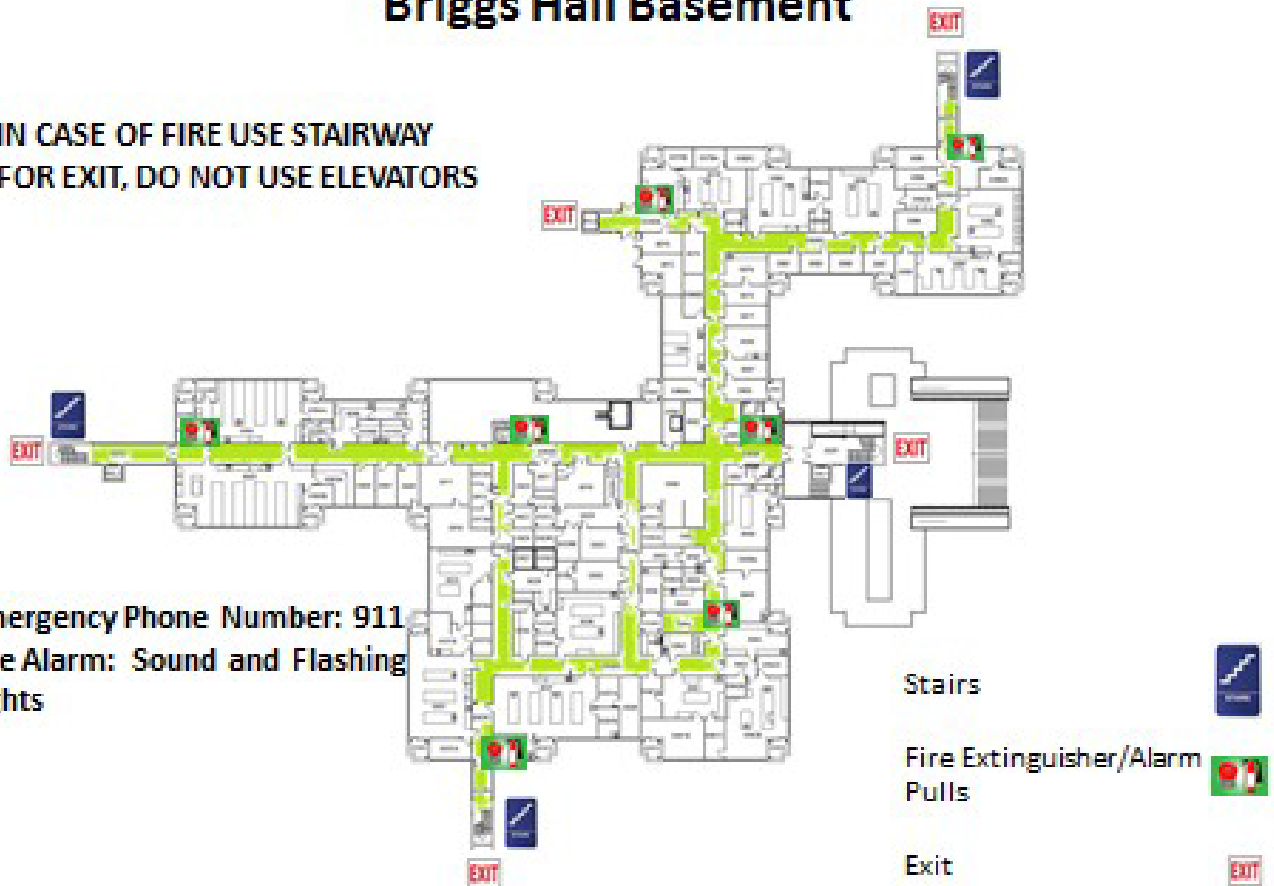
ORCHARD PARK GREENHOUSE COMPLEX



EVACUATION MAPS

Briggs Hall Basement

IN CASE OF FIRE USE STAIRWAY
FOR EXIT, DO NOT USE ELEVATORS



Emergency Phone Number: 911
Fire Alarm: Sound and Flashing
Lights

Stairs



Fire Extinguisher/Alarm
Pulls

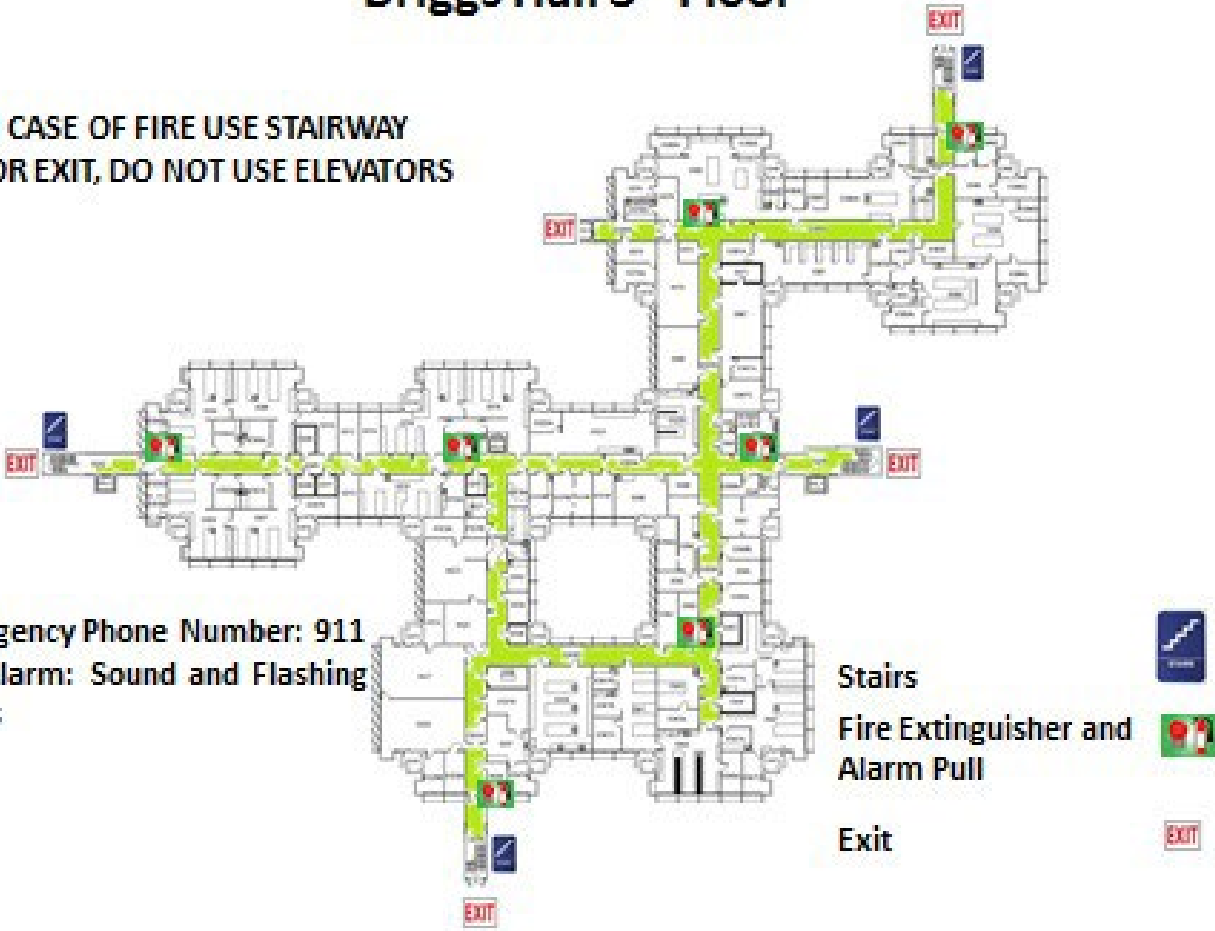


Exit



Briggs Hall 3rd Floor

IN CASE OF FIRE USE STAIRWAY
FOR EXIT, DO NOT USE ELEVATORS



Emergency Phone Number: 911
Fire Alarm: Sound and Flashing
Lights

- Stairs
- Fire Extinguisher and Alarm Pull
- Exit







Hutchison Hall 4th Floor

Emergency Phone Number: 911

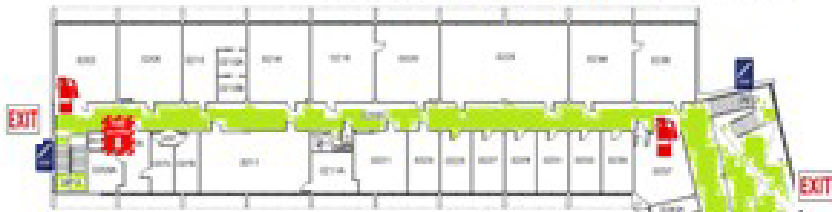
Fire Alarm: Sound and Flashing Lights



**IN CASE OF FIRE USE STAIRWAY
FOR EXIT, DO NOT USE ELEVATORS**

-  Fire Stairs
-  Fire Alarm Pulls
-  Fire Extinguisher
-  Exit

Everson Hall 2nd Floor



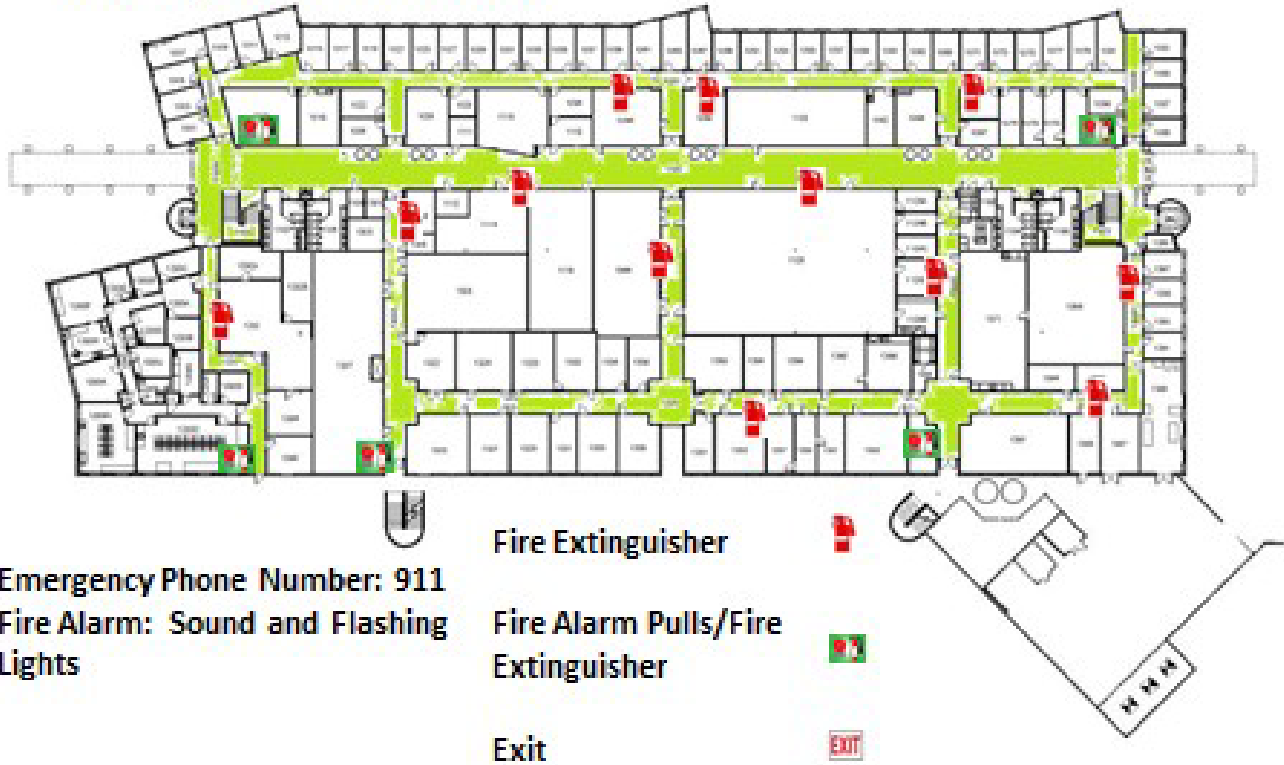
**IN CASE OF FIRE USE STAIRWAY
FOR EXIT, DO NOT USE ELEVATORS**

Emergency Phone Number: 911
Fire Alarm: Sound and Flashing
Lights



Academic Surge 1st Floor

IN CASE OF FIRE USE STAIRWAY
FOR EXIT, DO NOT USE ELEVATORS



Emergency Phone Number: 911
Fire Alarm: Sound and Flashing
Lights

Fire Extinguisher

Fire Alarm Pulls/Fire
Extinguisher




Exit

Storer Hall 6th Floor

**IN CASE OF FIRE USE STAIRWAY
FOR EXIT, DO NOT USE ELEVATORS**

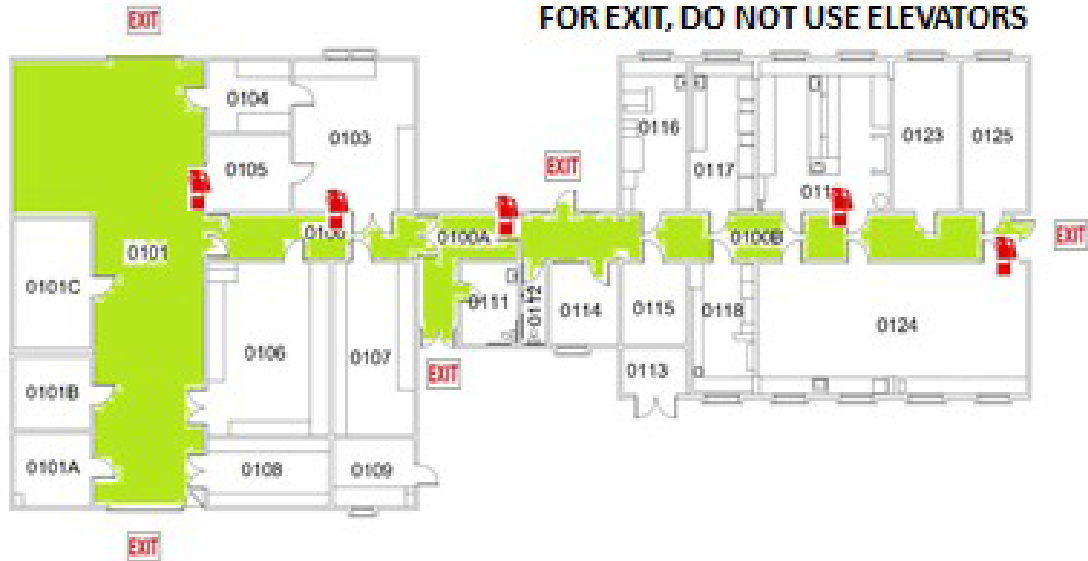


**Emergency Phone Number: 911
Fire Alarm: Sound and Flashing
Lights**



- Stairs** 
- Fire Extinguisher and Alarm Pull** 
- Exit** 

Laidlaw Bee Research Facility

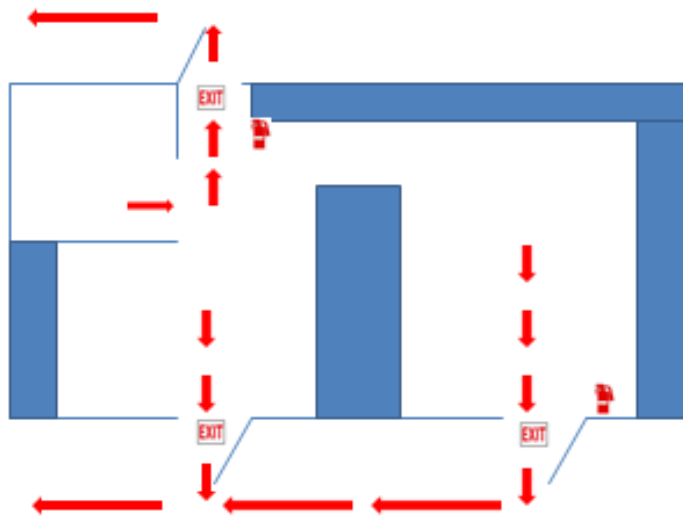
IN CASE OF FIRE USE STAIRWAY
FOR EXIT, DO NOT USE ELEVATORS





Emergency Phone Number: 911
Fire Alarm: Sound and Flashing
Lights

Fire Extinguisher 
Exit 

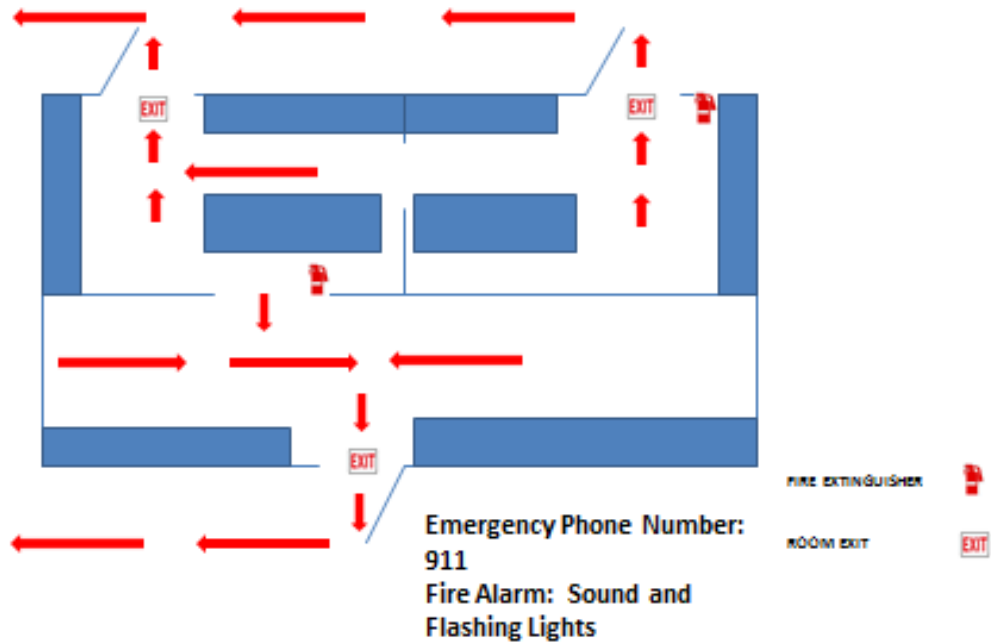
ORCHARD PARK ROOM 208



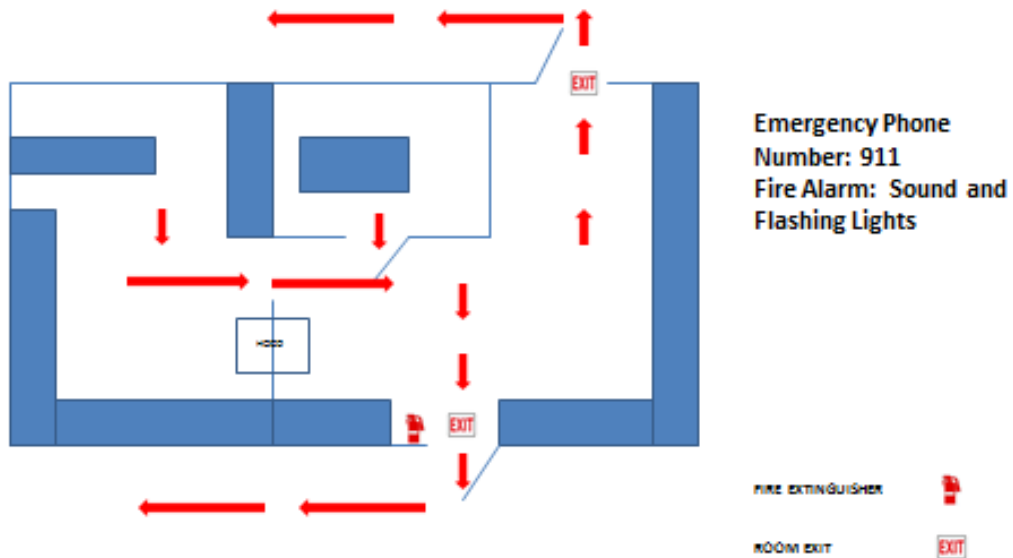
Emergency Phone
Number: 911
Fire Alarm: Sound
and Flashing Lights

- FIRE EXTINGUISHER 
- ROOM EXIT 

ORCHARD PARK ROOM 220



ORCHARD PARK ROOM 632



Roll Call Sheet

Entomology and Nematology
Office Location: 367 Briggs Hall

Employee Name	Phone	Cell/Other Phone	Building/Room	Status/ Location

Additional Training:

Communications for Campus-Wide Emergencies

In the event of a major emergency, there are multiple ways to distribute life-saving and other important information. Familiarize the individuals in your department with these communication methods:

- **Sign up in advance to receive UC Davis WarnMe messages**
This emergency notification service provides students and employees with timely information and instructions during emergencies. UC Davis WarnMe can send alerts by e-mail, text, telephone and cell phone messaging. To deliver messages, WarnMe uses employees’ work contact information from the university’s online directory, students’ e-mail addresses and personal contact information you voluntarily provide. Register and update your information at <http://warnme.ucdavis.edu>.
- **Check the University homepage www.ucdavis.edu**
UC Davis posts information about emergencies and other major news on its home page at www.ucdavis.edu. News can also be found at www.news.ucdavis.edu

- **Check official UC Davis social media channels**
UC Davis posts emergency information on its official social media channels. These channels include twitter, Facebook, Instagram and Snapchat. You can subscribe to updates from UC Davis by liking or following the channels. You can find all of the University's official social media channels at <https://www.ucdavis.edu/social-media>.
- **Call the Emergency Status Line (530) 752-4000**
The Emergency Status Line provides a brief recorded telephone message about the status of the Davis campus in an emergency. Messages will indicate the emergency's nature, and provide brief instructions. As more information becomes available, messages will point to additional information sources, such as the UC Davis home page.
- **Follow reports in the news media**
UC Davis works with the news media to share information about emergencies and provide direction to the university community. KFBK Radio in Sacramento (93.1 FM / 1530 AM) is the primary station for the federal Emergency Alert System for several area counties.

In a campus-wide emergency, the campus may communicate using one or all of the above methods of communication depending on the incident.

You will not be notified of every incident to which the UC Davis Police or Fire departments responds.

Ad

Sheltering-in-Place

One of the instructions you may be given in an emergency is to shelter-in-place. Shelter-in-place is used mainly for hazardous materials incidents and sustained police action, or when it is more dangerous to venture outside than to remain indoors in your current location. This means you should remain indoors until authorities tell you it is safe or you are told to evacuate. The following are guidelines that should be shared with your department's employees.

General Guidelines on how to Shelter-in-Place

- Select a small, interior room, with no or few windows, ideally with a hard-wired telephone (cellular telephone equipment may be overwhelmed or damaged during an emergency).
- Close and lock all windows and exterior doors.
- Review your EAP, inspect your workplace emergency kits if you have them.
- Do not exit the building until instructed to do so by campus officials.
- Check for status updates using the resources detailed in the section, "Communications for Campus Wide Emergencies."

Specific Shelter-In-Place Guidelines for a Hazardous Material Incident

- Turn off all fans, heating and air conditioning systems.
- If possible, seal all cracks around the door and any vents into the room.
- If you are in your car, close windows and turn off vents and air conditioning.

Community Survival Strategies for an Active Shooter

The UC Davis Police Department hosts workshops for members of the campus community on strategies to increase the likelihood of surviving an active shooter incident. The workshop covers five steps for increasing your chances of surviving an active shooter incidents and also provides demonstrations for attacking the attacker.

It is recommended departments allow two hours release time for employees. Community presentations are available on the Davis and Sacramento campuses throughout the year. To locate or schedule a workshop visit the [UC Davis Police Department](#) website.

In the training, *Community Survival Strategies for an Active Shooter* participants should be aware that the presentation deals with a very sensitive subject and uses actual audio tape from the 9-1-1 call at the Columbine shootings. Participants will also have the opportunity to see different types of firearms and should be prepared to hear what an actual gunshot sounds like.

Training Sign-in Sheet

****All Employees need to have documented training ****

Training Topic: Emergency Action & Evacuation Plan Date: _____

Instructor/Trainer: _____

1. _____
2. _____
3. _____
4. _____
5. _____
6. _____
7. _____

8. _____
9. _____
10. _____
11. _____
12. _____
13. _____
14. _____
15. _____
16. _____
17. _____
18. _____
19. _____
20. _____